



Kenfield

K750

INSULATED ENERGY DOOR

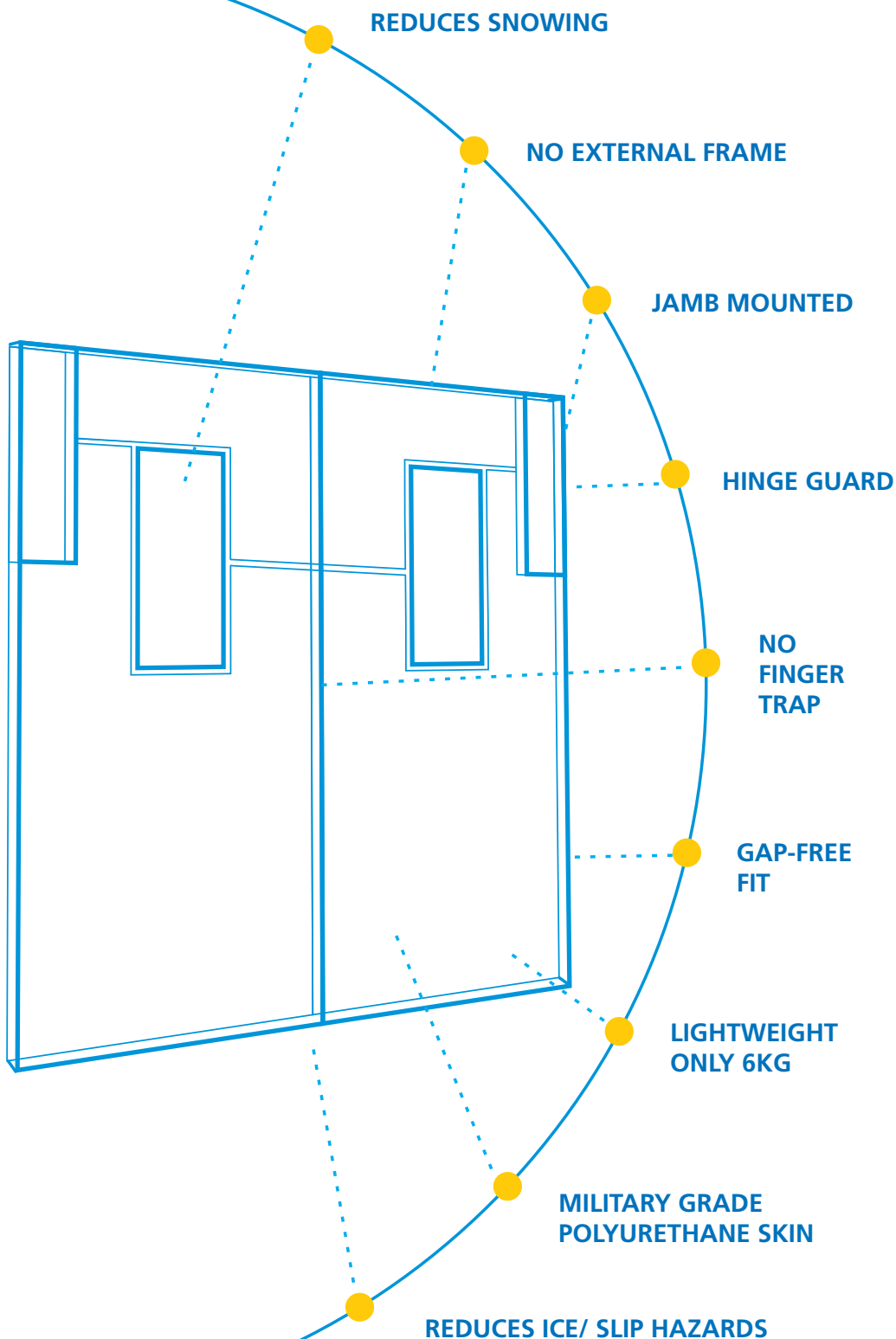


K750

INSULATED ENERGY DOOR



Kenfield

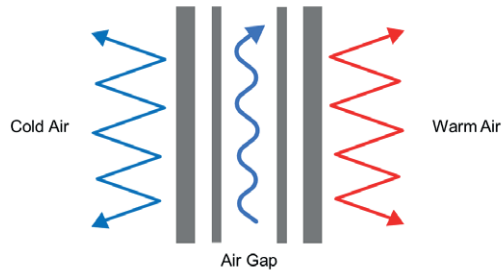


APPLICATIONS

- Cold stores
- Temperature controlled areas
- Narrow corridors/ restricted access areas

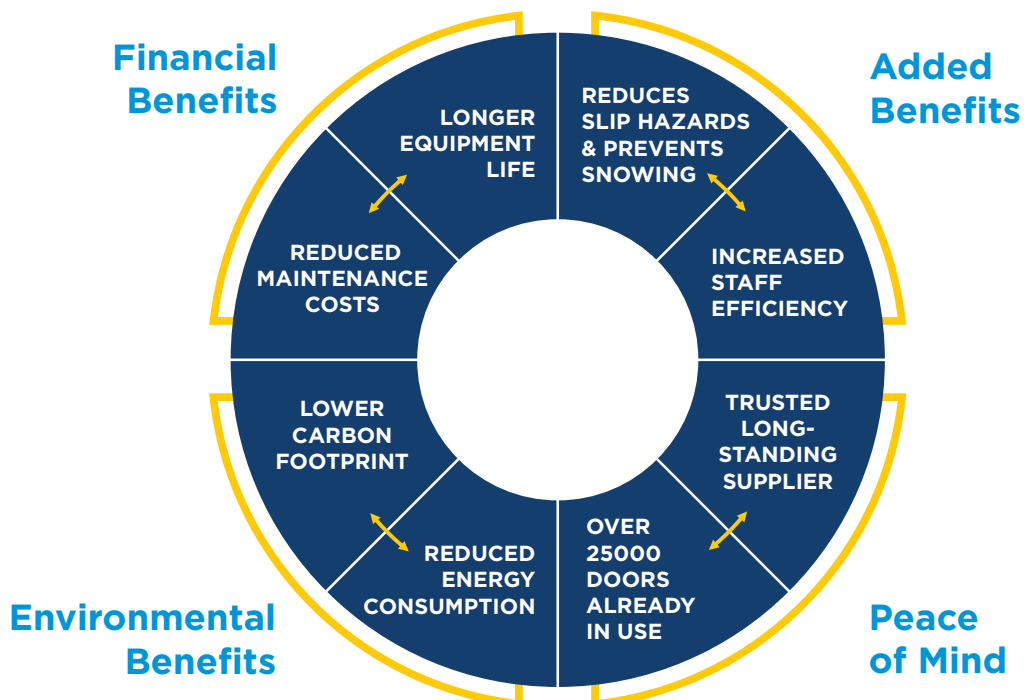
Designed specifically for temperature controlled areas, Energy door/strip combines exceptional thermal efficiency with flexibility. It also delivers a host of performance and safety benefits in a wide variety of applications.

How does the K750 work?



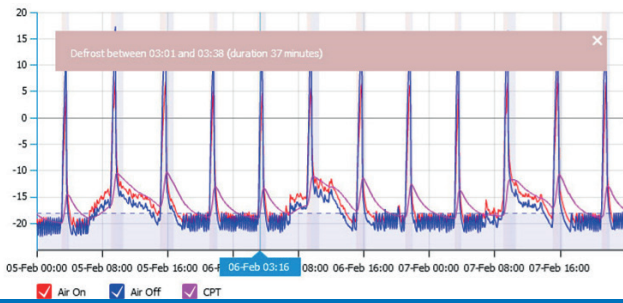
There are two layers of insulation with an air gap in between, which places it in a different league when it comes to keeping cool air in and warm air out.

-  High Visibility
-  Flexible Panels
-  Lightweight
-  Abrasive Resistant
-  Wipe-clean Panels

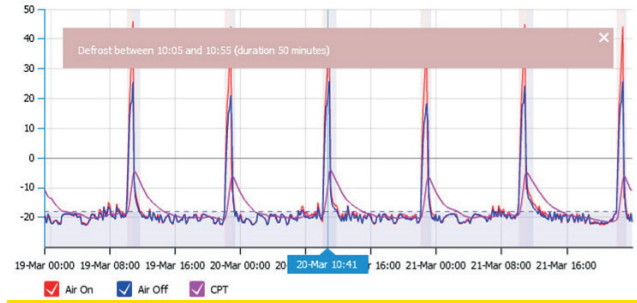




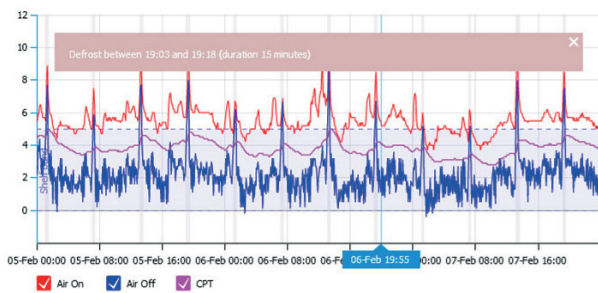
The graphics featured show the before and after effects of the installation of the K750 insulated door on a Tesco site. This data offers conclusive evidence about the benefits of using the K750.



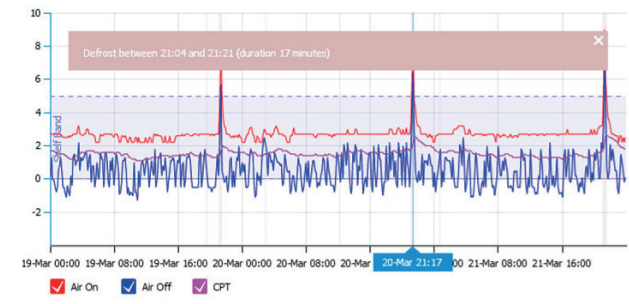
BEFORE: 4 X Defrost per day



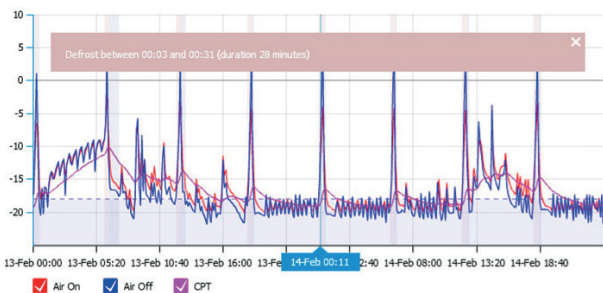
AFTER: 2 X Defrost per day



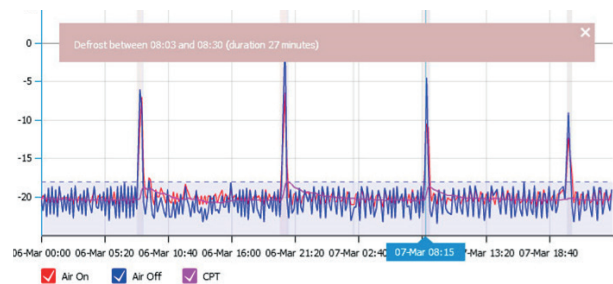
BEFORE: Air off 0 to 4°C, Air on 4 to 7°C
CPT 3 to 5°C 4 x Defrost per day



AFTER: Air off -1 to 2°C, Air on 2 to 3°C
CPT 1 to 2°C 1 x Defrost per day



BEFORE: 4 x Defrost per day, Ave. 30 min duration.
Air on between: -10°C and -20°C,
Air off between: -10°C and -21°C,
CPT between: -10°C and -19°C



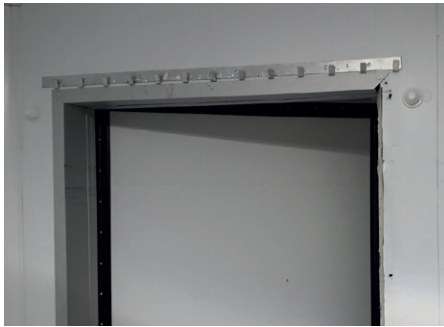
AFTER DATA: 2 x Defrost per day, Ave. 30 min duration.
Air on between: -18°C and -21°C,
Air off between: -18°C and -23°C,
CPT between: -19°C and -21°C

Kenfield Limited

UK Office: 29-31 Melchett Road, Kings Norton Business Centre, Kings Norton, Birmingham. B30 3HG
Ireland Office: Suite 2544, 17 Upper Pembroke Street, Dublin 2
Tel: 0121 451 3051 Fax: 0121 433 3247
Email: sales@kenfield.com www.kenfield.com



Problems Solved



1. Strip curtains removed by staff



2. Gaps in strip curtains



3. Strips hooked onto cages



4. Strip curtains not forming a barrier



5. Strips becoming misshaped

Problems Solved



6. Strips hooked over cages



7. Strips removed by staff



8 & 9. Strips hooked out of the way by staff leaving no thermal barrier



10. Strips cut off by staff to make access easier but resulting in no thermal barrier